

Tabouret Solvay

Jean Prouvé, 1941

vitra.



Tabouret Solvay

Tabouret Solvay is a simple, robust stool made of solid wood with a signature design that is visible at first glance: Jean Prouvé developed it, applying the design principles that he is known for. Thanks to its level seat, Tabouret Solvay can also be used as an occasional table.

Materials

- **Seat:** Solid wood, oiled; natural oak, smoke oak or american walnut.
- **Connecting element:** Sheet steel, powder-coated deep black.

DIMENSIONS

Ø350 Ø13¾"



Ø350 Ø13¾"



450 17¾"

400 15¾"

Tabouret Solvay

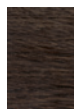
Surfaces and colors



70
natural oak
solid, oiled



75
american walnut
solid, oiled



90
smoked oak solid
wood, oiled



12
deep black
powder-coated
(smooth)

Stool

Linking element

